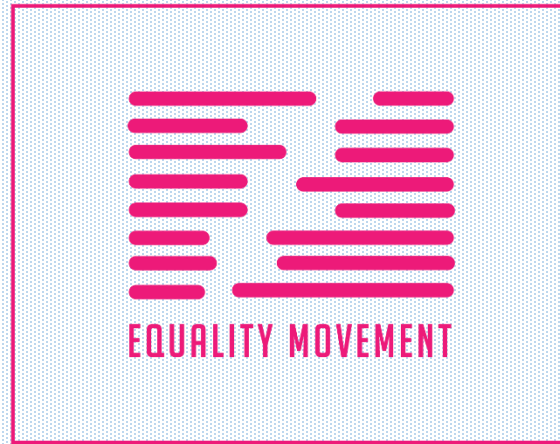


PrEP Program in Georgia: Challenges, Achievements & Barriers to Accessing PrEP for MSM and Trans Women



David KAKHABERI
Equality Movement
2019

Equality Movement is a community-based organization and its mission is to support women and the LGBTQ community to ensure their proper integration in the society, and, at the same time, to facilitate the eradication of sexism and homophobia in the society.

The organization works in the following directions:

- Ensuring the access to the health care services for women and the LGBTQ community
- Mobilizing and supporting the social integration of women and the LGBTQ community
- Forming a supportive environment for empowering women and the LGBTQ community



PrEP program target groups:

- Gay Men
- Bisexual Men
- MSM Sex workers
- TGW Sex Workers
- Serodiscordant Couples
- Drug User MSM and TGW
- Clients of MSM & TGW Sex Workers

Eligibility Criteria:

- Age: 18 >
- HIV Status: Negative at least 1 week before enrollment
- Meets one or more of listed criteria, during last 6 months
- Regular HIV Positive Sexual Partner, who doesn't receive treatment or is not virally suppressed
- Involved into Sex Work
- Injective drug use
- History of STIs
- 5 or more male sexual partners
- History of condom less sexual behavior (both incentive and receptive)
- Referred to PeP
- History of high-risk sexual practices after use of alcohol or drugs

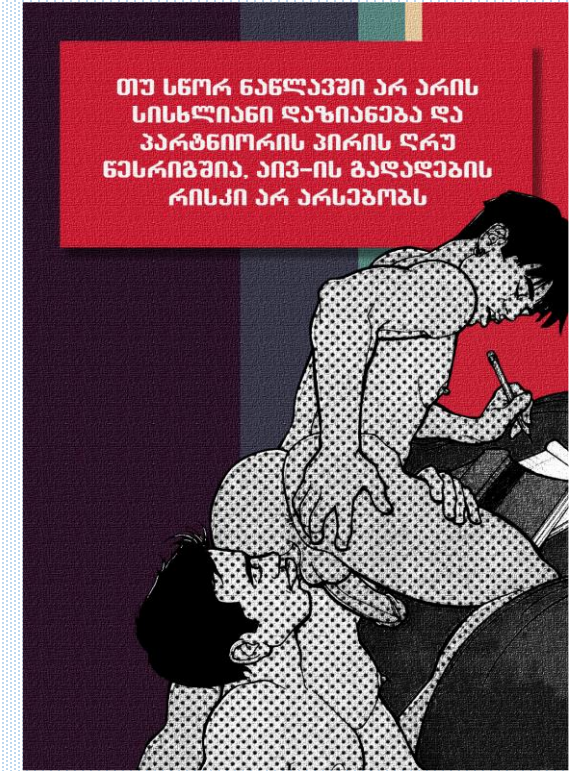
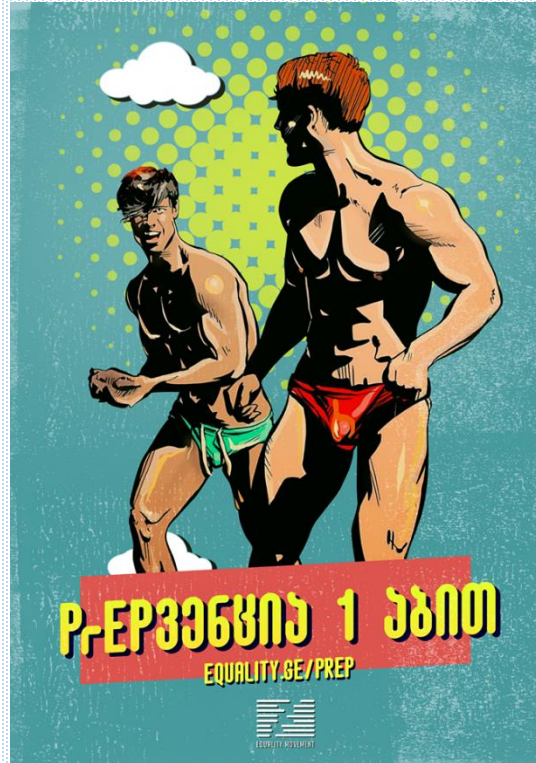
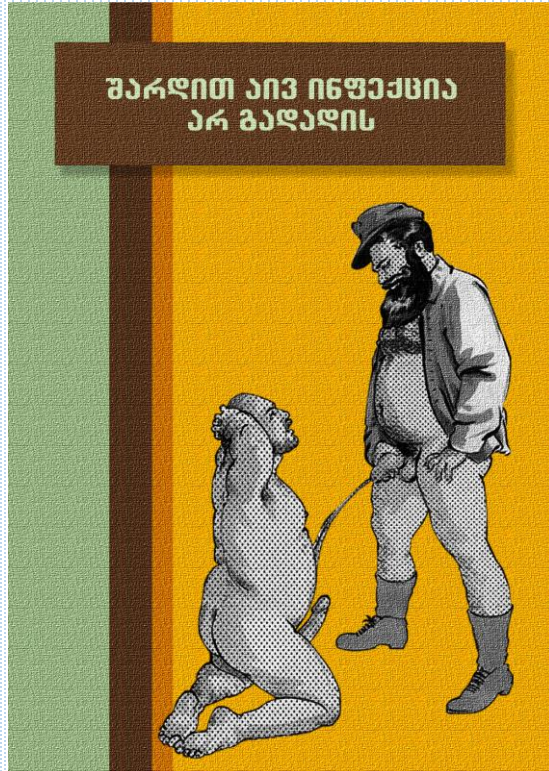
№	Risk Index		
1	Age	If <18 years, score 0 If 18-28 years, score 8 If 29-40 years, score 5 If 41-48 years, score 2 If 49 years or more, score 0	
2	In the last 6 months, how many men have you had sex with?	0 - 2 score 0 3 - 4 score 4 5 > score 7	
3	In the last 6 months, how many times did you have receptive or insertive anal sex with a man without a condom?	1 > score 10 0 score 0	
4	In the last 6 months, how many of your male sex partners were HIV positive?	1 > score 8 1 score 4 Don't know score 2 0 score 0	
5	In last 6 months, have you used injective drugs?	Yes, score 6 No, score 0	
6	In last 6 months, have you been involved into the sex work?	Yes, score 6 No, score 0	
7	In last 6 months, have you used drugs or alcohol for sexual stimulation?	Yes, score 6 No, score 0	
		Total Score	

Demonstration Project - Georgia

- Scale: 300 persons Geography: Tbilisi, Batumi, Kutaisi (No limits as for place of living)
- Timeframe: August 2017 – December 2019
- Inclusion Schedule: 20 people per month
- Accessibility: Free of charge
- Service Providers: EQUALITY MOVEMENT; AIDS Center

Outreach and Communication Strategy

1 Pill PrEPvention



Communication against STD Risks

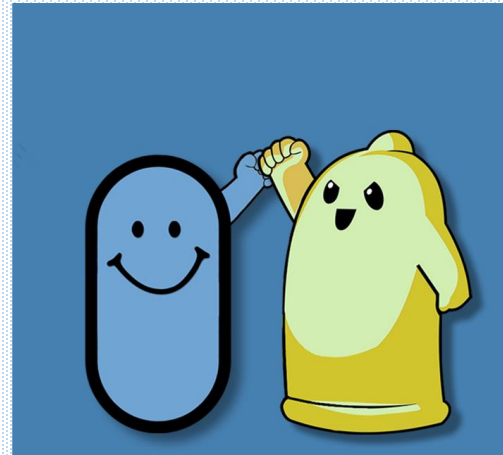
ქონდილობა

სივამთოვები

- მეფეფები სასქესო ორგანოზე
ან მიმდებარედ
- ქაველი მეფეფის მიღამოვები
- მეფეფიდან სისხლდანა
საქსის დროს

მკურნალობა

ვირუსული მეფეფების (ქონდილობა)
მკურნალობის მრავალი მეთოდი
არსებობს. თუმცა, ყველაზე
რეკომენდებული კრიოდესტრუქცია
(მოწვა) ან ადგილობრივი იმუნიტეტის
ასამაღლებელი საყვიალური
კრემების გამოყენებაა



გონორეა

სივამთოვები

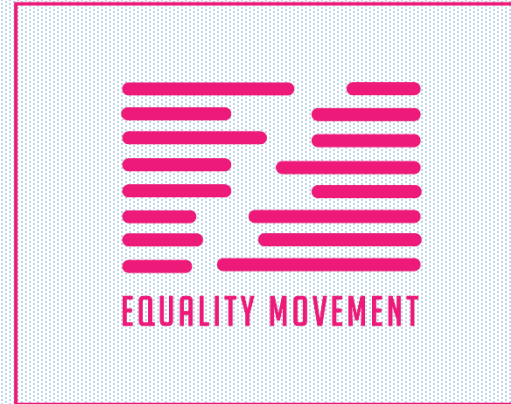
- გამონადენი პენისიდან
ან ვაგინიდან
- შარდვის დროს ტკივილის
ან წვის შეგრძნება
- გავრ ადამიანში დაავადება
უსიმპტომოდ მიმდინარეობს

მკურნალობა

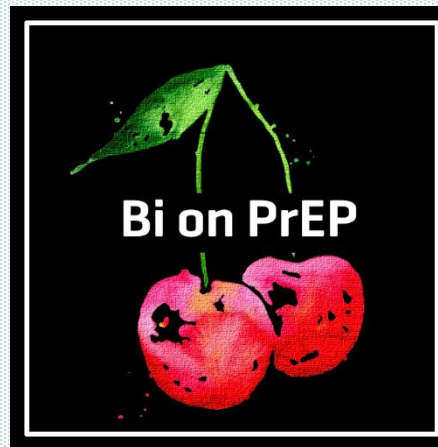
გონორეა განკურნებადი დაავადებაა.
სამკურნალოდ, როგორც წესი, ანტიბიოტიკური
თერაპიას იყენებენ, რომელსაც შეიძლება
ერთჯერადი ხანითი კურდღის. ამ დაავადების
მკურნალობა არ ნიშნავს, რომ ის მეორედ
აღარ დამარტება ადამიანს



Thank you!



David KAKHABERI
Warsaw, 2019



PrEP Access Barriers among MSM and Trans Women in Georgia

PrEP in Europe Summit - October 2019

**Giorgi Soselia - Advocacy Coordinator - Medecins Du Monde (France)
Representation in Georgia**

Content

- Methodology and Design
- Target Groups
- Results and Conclusions
- Recommendations

Methodology

Qualitative Survey with Mixed Methodologies

- Focus Groups Discussions (7 / 43 persons)
- Key Informant Interviews (11 persons)
- Online Questionnaire (92 persons)

Recruitment done in through LGBTQI Community Based Organization - Equality Movement

Profile and Eligibility Criteria

- Age: 18 >
- Self-Identifies as MSM or Trans Women
- Reports at sexual contact with man in past 6 months
- For persons enrolled in PrEP programme - 1 month >

Key Informant Interviews

- PrEP Provider (Community and Medical)
- Medical Institution working in Infectious Diseases
- Organizations working with MSM and TGW communities, including HIV service providers
- PLWH organizations
- PrEP policymakers

Demographics

- Age: 18-30 yo; among them 48 % aged 18-24
- 43.9 % have a higher education (degree) and 25 % are students
- 58 % are employed by the time of participation in survey
- Only 10.7 % of respondents living in the regions are employed
- Average monthly income range 160 - 320 USD
- 54 % lives with the parents

Behaviour

- Sexual contact with female partners - 1 respondent
- 23 % reported 10 or more sexual partners within last month
- Drug Use 66.6 % - Cannabis, Ecstasy, Poppers, Amphetamines
- Experience of a group sex practice - 74.72 %
- Sexual intercourse under the influence of drugs or alcohol - 54 %
- Rate of condom use decreases by 13 % (from 54 to 41 %)

Social Barriers

- High level of HIV related Stigma and Discrimination
- High levels of Homo and Trans phobia
- Institutionalised Stigma in Medical Facilities including AIDS Centre
- Lack of HIV related knowledge in LGBTQI community, including low level of perception on own risks

Programme Related Barriers

- Over-Medicalization of PrEP Service Delivery
- Lack of Diversity in Models and Outlets of PrEP Service (Community Provided PrEP, On-Demand PrEP)
- Lack of complexity and integrity of needs of LGBTQI community (no case management and addressing social barriers)
- Geographical access
- Lack of consideration of community sub-groups (same approach for MSM and Trans) and behavioural patterns (drug use)
- Lack of linkage to other prevention services (harm reduction)

Sustainability Barriers

- PrEP is funded by GFATM, which is phasing out from the country
- No PrEP Protocol available and approved
- Lack of engagement of community in service delivery in case of state funding - contracting mechanisms

Recommendations

- Introduce alternatives in model of PrEP delivery - On-Demand PrEP
- Introduce 1 Stop Shop principle and fully integrate PrEP and respective medical services in Community Based Organization
- Ensure Geographical Access - and scale up to regions
- Address institutionalised stigma in medical facility
- Ensure effective networking and referral pathways with service providers – prevention, PLWH care and support, harm reduction etc.
- Elaborate LGBTQI specific communication strategies
- Allocate State Budgetary Funding for PrEP

Thank You !!!